



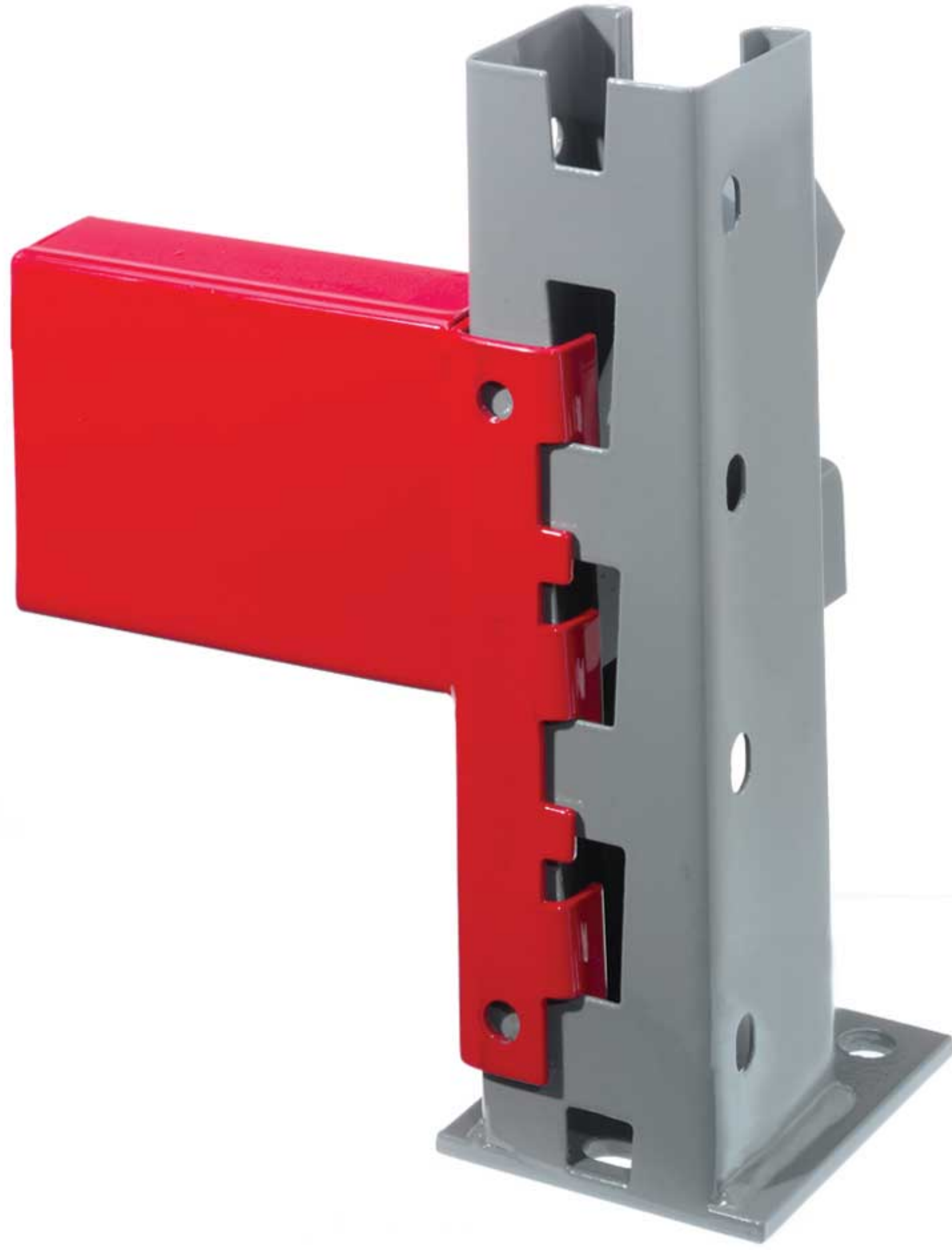
# UNARCO PALLET RACK

**KEY-LOK  
TER-LOK**

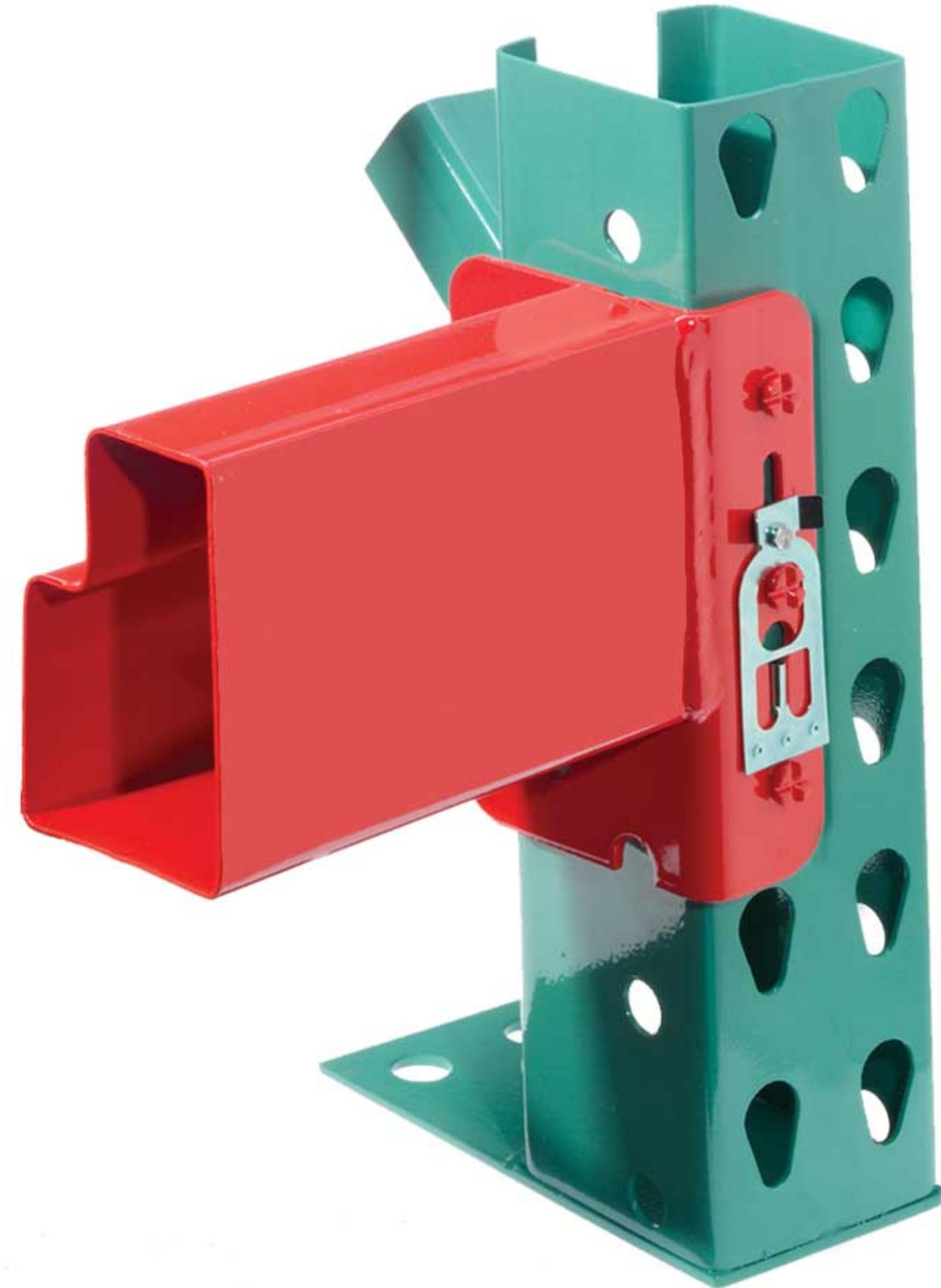




# KEY-LOK PALLET RACK



# TER-LOK PALLET RACK



## Upright Sample Catalog Number

TER-LOK UTUH - 13 - 144 - 42

KEY-LOK UCUH - 13 - 144 - 42

Brand	Gauge	Frame	Frame
Code		Height	Depth

## Beam Sample Catalog Number

TER-LOK UTB - 400 - 096 - 16

KEY-LOK UCB - 400 - 096 - 16

Brand	Beam	Beam	Gauge
Code	Height	Length	

## TER-LOK & KEY-LOK PALLET RACK FEATURES:

### STABILITY:

*Roll-formed steel with all-welded construction*

### ADAPTABLE:

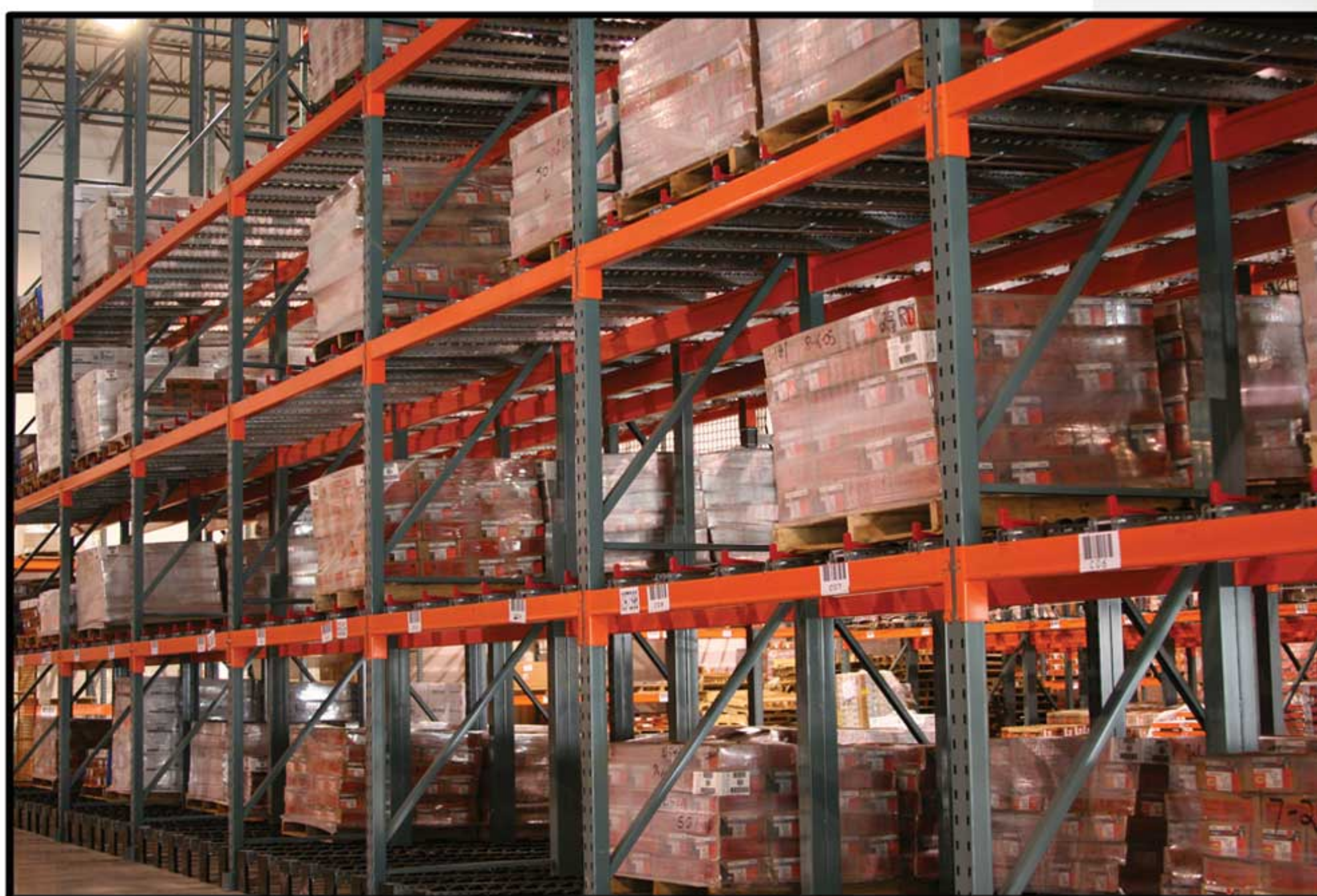
*Rigid connections adjustable on 3" (Key-Lok) or 2" increments (Ter-Lok)*

### VERSATILITY:

*40-foot continuous length capability*

### INSTALLATION EASE:

*Boltless beam connector system provides fast installation and repositioning*



## UNARCO Standard Colors



UNARCO  
BLUE



UNARCO  
BEIGE



UNARCO  
YELLOW



UNIVERSAL  
BLUE



UNARCO  
GREEN



UNARCO  
GREY



UNARCO  
ORANGE



UNARCO  
WHITE

UNARCO  
RED

Contact a UNARCO representative for special finish requests. Hot Dipped galvanized finish also available.



# TER-LOK & KEY-LOK BEAM CAPACITY CHART

Beam Length	B-300 3" BEAM	B-350 3-1/2" BEAM	B-400 4" BEAM	B-450 4-1/2" BEAM	B-500 5" BEAM	B-525 5-1/4" BEAM	B-525 5-1/4" HD BEAM	B-550 5-1/2" BEAM	B-600 6" BEAM	B-650 6-1/2" BEAM
48"	7,671	9,243	10,763	12,452	14,283	15,254	17,222	18,368	20,779	23,339
54"	6,925	8,314	9,655	11,147	12,766	13,626	15,376	16,391	18,528	20,799
60"	6,327	7,569	8,766	10,103	11,551	12,323	13,898	14,808	16,727	18,766
66"	5,835	6,958	8,038	9,247	10,557	11,255	12,688	13,512	15,252	17,102
72"	5,085	6,448	7,430	8,533	9,727	10,365	11,678	12,431	14,022	15,715
78"	4,404	5,924	6,915	7,928	9,025	9,612	10,824	11,516	12,981	14,540
84"	3,857	5,171	6,473	7,409	8,422	8,965	10,091	10,731	12,088	13,533
90"	3,410	4,558	5,967	6,959	7,899	8,404	9,455	10,050	11,314	12,660
96"	3,040	4,052	5,292	6,564	7,441	7,913	8,898	9,454	10,636	11,895
102"		3,629	4,728	6,068	7,036	7,479	8,406	8,927	10,037	11,220
108"		3,271	4,252	5,450	6,676	7,093	7,968	8,459	9,504	10,620
114"		2,965	3,846	4,924	6,175	6,747	7,576	8,039	9,027	10,082
120"		2,702	3,498	4,472	5,599	6,243	6,934	7,661	8,598	9,598
126"		2,474	3,195	4,082	5,102	5,686	6,312	7,012	8,208	9,159
132"		2,274	2,932	3,741	4,669	5,202	5,771	6,408	7,847	8,760
138"		2,098	2,700	3,443	4,289	4,777	5,297	5,879	7,196	8,395
144"		1,942	2,495	3,179	3,955	4,403	4,879	5,413	6,623	8,005
150"		1,803	2,313	2,945	3,658	4,071	4,509	5,000	6,116	7,390
156"		1,679	2,150	2,737	3,394	3,776	4,180	4,633	5,664	6,843

Beams available in 1" increments.

All capacities are expressed in pounds per pair of beams. Only gravity loading and the RMI required impact have been considered.

All values are based on a uniformly distributed load (i.e. each beam carries 50% of load) and assume proper installation and no damage.

The deflection limit for all beams is length divided by 180.

Beams that are longer than 150" require crossbars, lateral ties, wire decks or some other type of lateral restraint.

Values in the table are for beam bending only. Shear on the connectors and weld strengths, etc. are not taken into consideration.

Capacities include 12.5% impact for two pallets side by side. For a three-pallet wide shelf, the values should be multiplied by 0.95.

For one pallet per shelf the values should be multiplied by 0.90.

FOR ADDITIONAL SIZES OR CAPACITIES PLEASE CALL YOUR SALES REPRESENTATIVE.

# TER-LOK & KEY-LOK UPRIGHT CAPACITY CHART

Maximum Unsupported Length	3x1-5/8 UCUL-14 UTUL-14	3x1-5/8 UCUL-13 UTUL-13	3x3 UCUH-14 UTUH-14	3x3 UCUH-13 UTUH-13	3x3 UCUH-12 UTUH-12
36"	15,677	20,050	21,776	31,759	39,659
42"	14,003	17,891	19,891	28,557	35,452
48"	12,205	15,516	17,829	25,177	31,073
54"	10,910	13,804	16,267	22,685	27,865
60"	9,833	12,375	14,934	20,602	25,197
66"	8,746	10,946	13,562	18,501	22,524
72"	7,667	9,545	12,168	16,406	19,874
78"	6,740	8,357	10,824	14,450	17,450
84"	5,959	7,362	9,668	12,799	15,414
90"	5,296	6,525	8,673	11,398	13,695
96"	4,732	5,816	7,813	10,202	12,235

Unarco designs conform to the latest Rack Manufacturers Institute (RMI) specifications and American Iron & Steel Institute (AISI) Cold Formed Steel Design Manual using "Load and Resistance Factor Design" (LFRD) method.

Frame capacities are based on maximum unsupported length which is the measurement of the distance between the floor and the top of the first beam or the maximum spacing between beams -- whichever is dominant.

Contact the Office for the following conditions:

- Any application where the frame load exceeds 31,000 pounds. These situations may need heavier than standard frame bracing.
- Any application that requires seismic design where the ground acceleration is greater than 0.05.
- Configurations that require a frame deeper than 60" or taller than 480".
- Applications that involve support of platforms or catwalks or any application other than standard pallet rack.
- Single bays of rack.
- Any condition which creates uncertainty as to the proper use of these tables.

Table values are column capacities based on gravity loading only. The table values are based on the assumption that the rack bracing is adequate (none of the above conditions apply), and all other aspects of the rack have been properly designed. All values are for undamaged racks.







**UNARCO**

**UNARCO Material Handling, Inc.**

407 E. Washington Street

Pandora, Ohio 45877-0266

Phone: (800) 448-0784 (419) 384-3211

Fax: (419) 384-7239

**[www.UNARCORACK.com](http://www.UNARCORACK.com)**